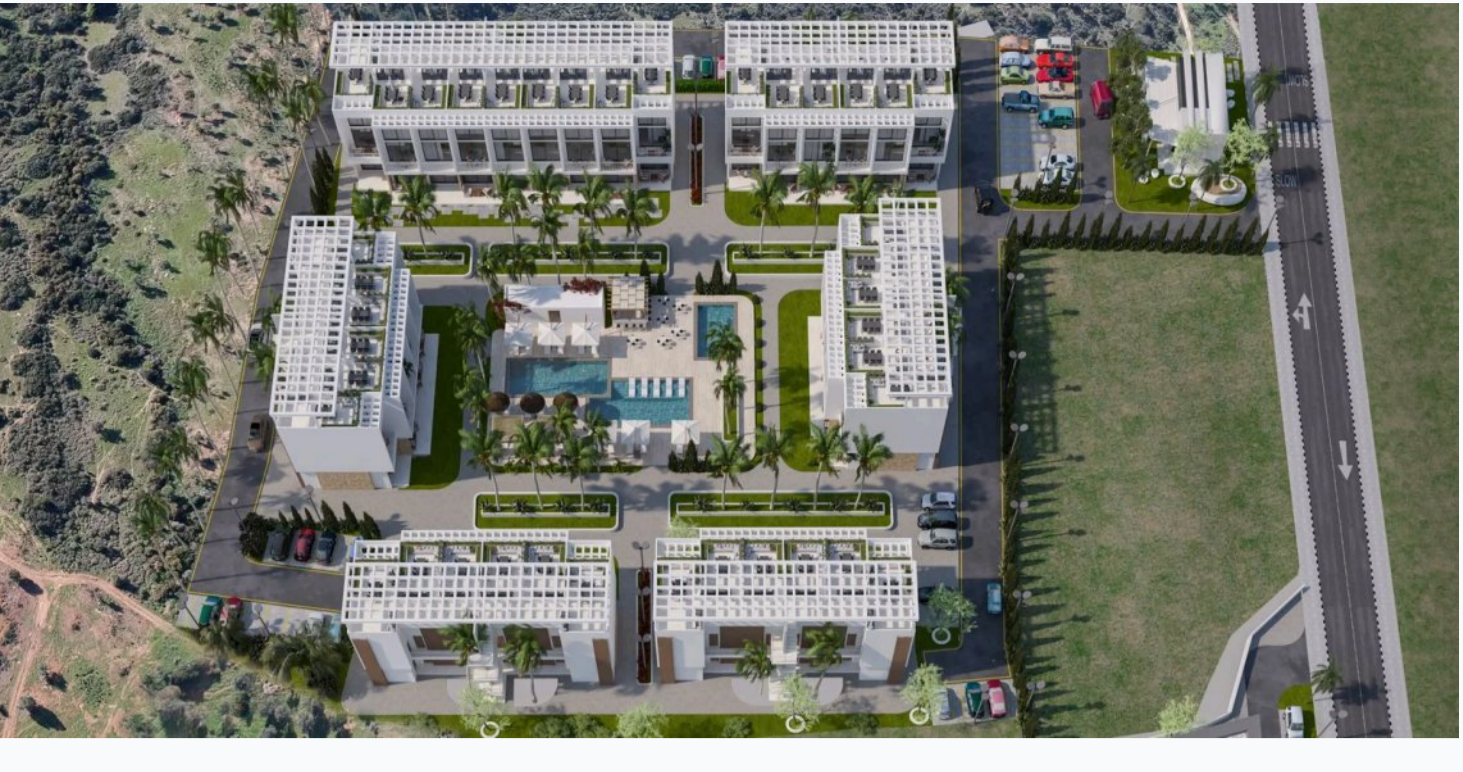


## Reverie Esentepe residential complex

Location **Kyrenia, Esentepe**



### About the project

Developer	<b>Omağ Development</b>
Start of sale	<b>13.11.2023</b>
Key handover	<b>2027</b>
Houses/blocks	<b>14</b>
Building floor	<b>2</b> Min <span style="margin-left: 20px;">2</span> Max
Units total	<b>74 - Studio, 90 - 1+1, 16 - 2+1</b>

Distance to the sea - 300 m

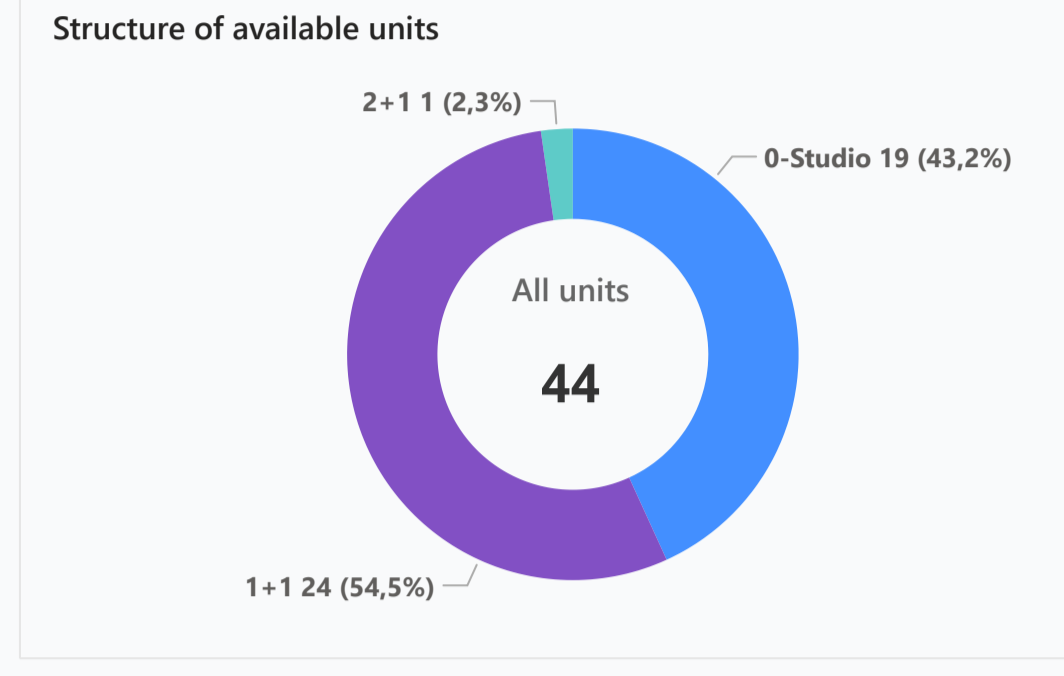
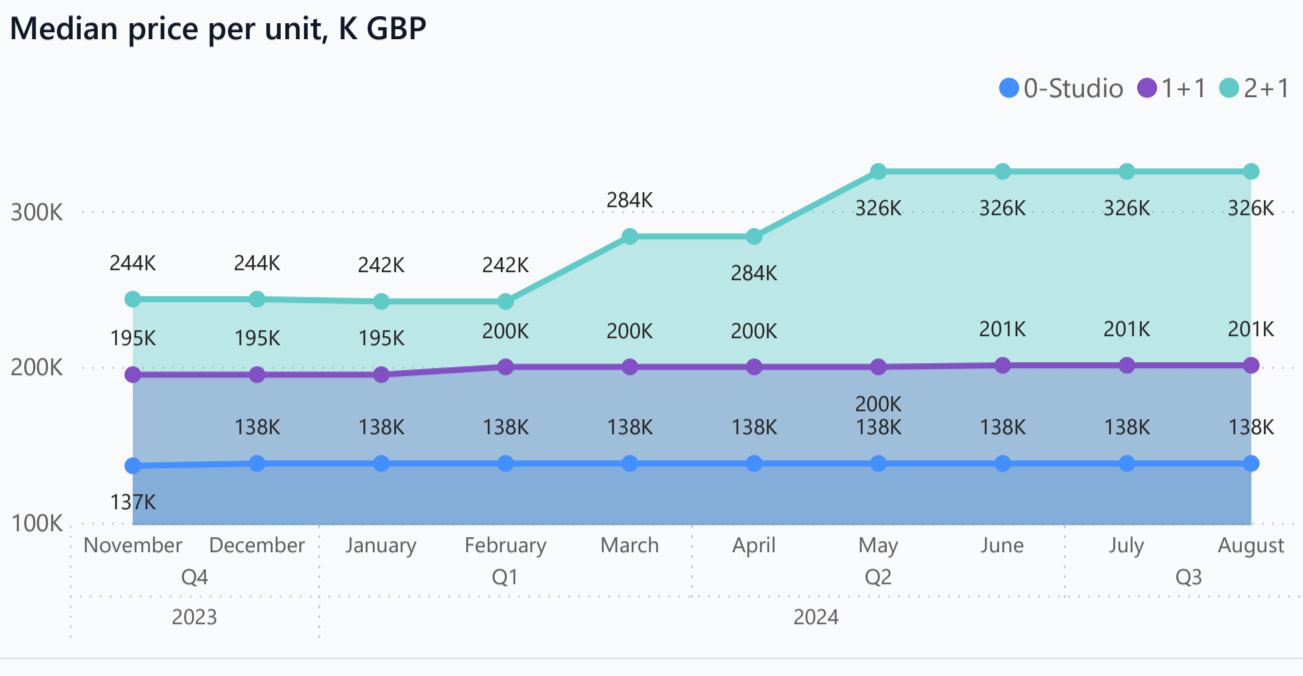
Distance to key locations:  
 Airport 60 min. Supermarket 5 min. Pharmacy 6 min. School 7 min. Kindergarten 10 min. Hospital 6 min. project is located in Esentepe

These brand-new luxurious apartments offer you unlimited sea and mountain views all year around. Placed in the picturesque area of Esentepe, on the east coast of North Cyprus, with a perfect blend of the blue shades of the Mediterranean Sea and the green shades of the Kyrenia mountains, you'll get to discover a fresh lifestyle with all the amenities right at your door step. It is a good investment opportunity in North Cyprus due to the beachfront location and high rental potential.

### Complex infrastructure

Bar	Beauty salon	Fitness centre	Open pool	Parking	Pharmacy	Restaurant	Sauna	Shops	Supermarket
VRF system	Yoga and meditation rooms								

### Available units **44** / 540 total



### Plans



### Payment plans

Deposit (non-refundable) 5000 GBP

<b>Option 1</b> <input checked="" type="radio"/> Down payment <b>35 %</b> Installments months: 36 Discount: - Offer: -	<b>Option 2</b> <input checked="" type="radio"/> Down payment - Installments months: - Discount: - Offer: -	<b>Option 3</b> <input checked="" type="radio"/> Down payment - Installments months: - Discount: - Offer: -	<b>Option 4</b> <input checked="" type="radio"/> Down payment - Installments months: - Discount: - Offer: -
--	---	---	---

### Special offer

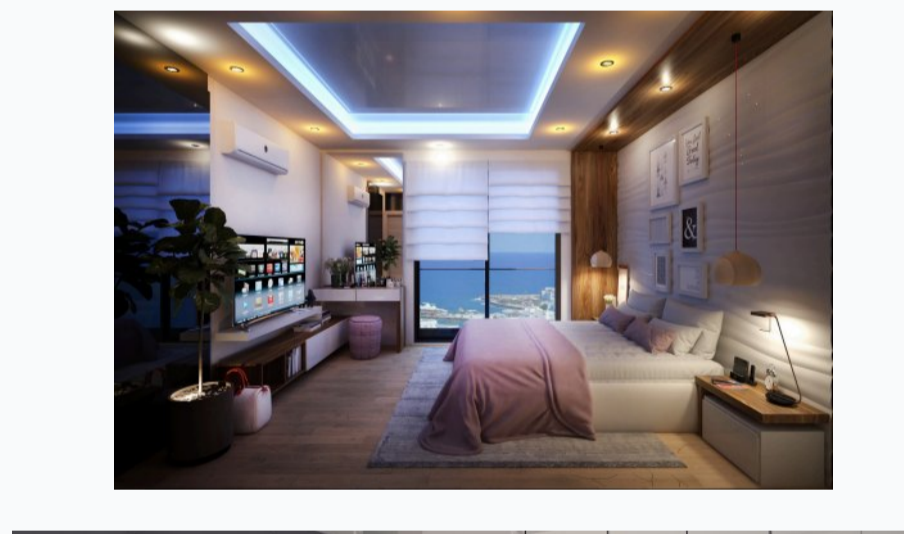
**Fully furnished design package** Rental guarantee

Trafo 2500 GBP Resale - Maintenance fee - Rental services -

### Details

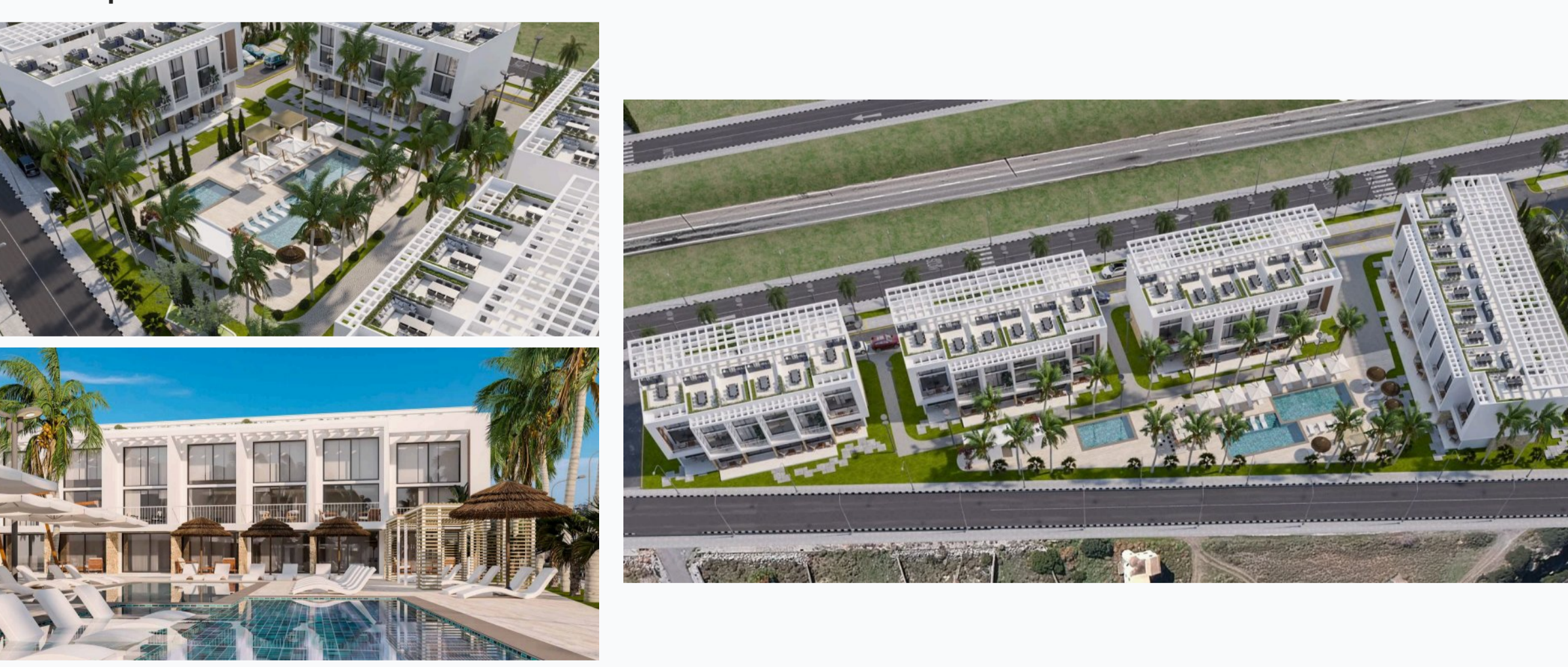
Bedrooms	Subtype	Block	Unit №	Floor	View	Bathroom	Internal area, sq. m	Balcony/ Terrace, sq. m	Rooftop terrace, sq. m	Garden, sq. m	Gross covered area, sq. m	Current price, GBP	Price per sqm, GBP
0-Studio	Flat	A7	5.0	0				35			95	135 000	1 421
0-Studio	Flat	A7	3.0	0				35			95	140 000	1 474
0-Studio	Flat	B1	7.0	0				35			95	135 000	1 421
0-Studio	Flat	B1	3.0	0				35			95	140 000	1 474
0-Studio	Flat	B1	4.0	0				35			95	140 000	1 474
0-Studio	Flat	C1	3.0	0				35			95	125 000	1 316
0-Studio	Flat	C1	4.0	0				35			95	128 000	1 347
0-Studio	Flat	C1	5.0	0				35			95	130 000	1 368
0-Studio	Flat	C1	6.0	0				35			95	138 000	1 453
0-Studio	Flat	D1	4.0	0				35			95	135 000	1 421
0-Studio	Flat	D1	2.0	0				35			95	138 000	1 453
0-Studio	Flat	D1	3.0	0				35			95	138 000	1 453
0-Studio	Flat	D1	1.0	0				35			95	145 000	1 526
1+1	Flat	A2	11.0	01					35		115	216 000	1 878
1+1	Flat	A2	8.0	01					35		125	218 000	1 744
1+1	Flat	A2	9.0	01					35		125	235 000	1 880
1+1	Loft	A2	10.0	01					35		125	235 000	1 880
1+1	Flat	B1	17.0	01					35		125	195 000	1 560
1+1	Loft	B1	16.0	01					35		125	202 000	1 616
1+1	Flat	B1	15.0	01					35		125	208 000	1 664
1+1	Flat	B1	11.0	01					35		125	213 000	1 704
1+1	Flat	B1	12.0	01					35		125	213 000	1 704
1+1	Flat	B1	14.0	01					35		125	213 000	1 704
1+1	Loft	B1	13.0	01					35		125	213 000	1 704
1+1	Flat	C1	11.0	01					35		125	170 000	1 360
1+1	Loft	C1	10.0	01					35		125	170 000	1 360

### Interior specification



Ceramic flooring	Fitted wardrobes in each bedroom	Laminate flooring in the bedrooms
------------------	----------------------------------	-----------------------------------

### Exterior specification



BBQ place on the roof	Beach and beach facilities	Jacuzzi	Landscape design	Terracing with inbuilt lighting & power sockets
-----------------------	----------------------------	---------	------------------	---

### Location of complex

